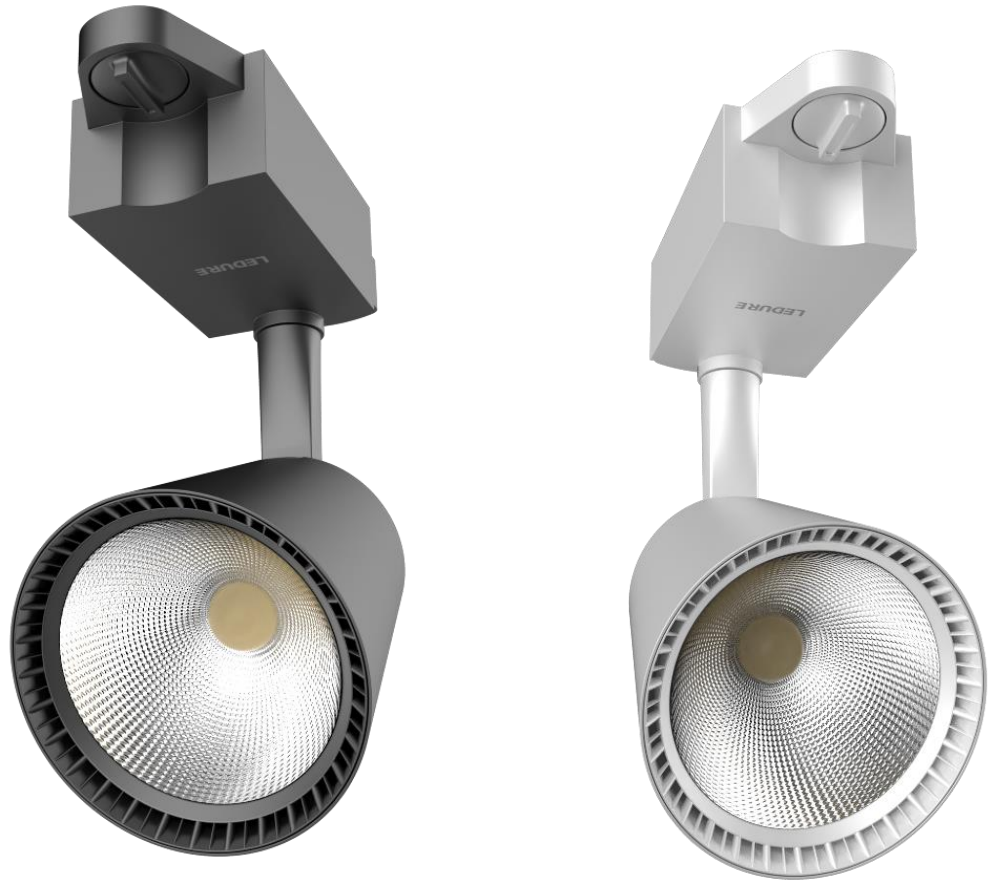


Tracklight Series



Ledure Track Light Series provides stylish, energy efficient & superior quality range of LED track lights. These repositionable track fixtures are available in a variety light colors and reflector finishing's to suit any type of modern, ultra-modern or traditional décor. Light up your décor with these black or white repositionable fixtures, to add a touch of subtly sophisticated design to your interior space. Ledure track lights are manufactured to give your space a sleek and modern finish. These flexible fixtures can be repositioned at your convenience to highlight the best features of your space. Whether you're doing up your office, showrooms or commercial space, well fitted track lights create an ambient lighting experience while ensuring low energy consumption..

Series	Tracklight Series			Additional Information	
Input Watt	12	20	30	System lumens (Lm/W)	> 140
Product Code	LD-11-12W	LD-11-20W	LD-11-30W	CRI	> 80
Led /Chip	12	20	36	Input Voltage (AC)	90-320V
Led Rating Current (mA)	300	600	1000	Power Factor	>0.5
Number Of Leds	1	1	1	Surge Protection	Upto 3 KV
View Angle	36*	36*	36*	Driver Efficiency (%)	>85%
Color Temperature	3000K-6000K	3000K-6000K	3000K-6000K	Driver (Type)	Non-Isolate CC
Lumens	1200-1320	2000-2200	3000-3300	Driver Location	Internal
Input Current	100 mA	86 mA	130 mA	IP (20/40/65)	IP20
Calculated Input current (@ 240 V)	100	88	132	BIS (IS Number)	IS 10322 (PART 5/SEC 1)
Output Current	270mA	480 mA	710 mA	BIS (R Number)	R-93010880
Output Voltage	36V	36V	36V	Led Life	> 50000 Hrs
Shape	NA	NA	NA	Operating Temperature	-10* to +50* C
Dimensions (Length - mm)	N.A	N.A	N.A	Rated Voltage (AC)	240V
Dimensions (Width - mm)	N.A	N.A	N.A	Frequency (Hz)	50Hz± 2
Dimensions (Height - mm)	N.A	N.A	N.A	Protection	Over Temperature, Short-circuit Protection, OC Protection, Reverse Polarity Protection
Dimensions (Cutout - mm)	N.A	N.A	N.A		
BIS Model No.	LTL 12	LTL 20	LTL 30		
Packing	12	12	12		